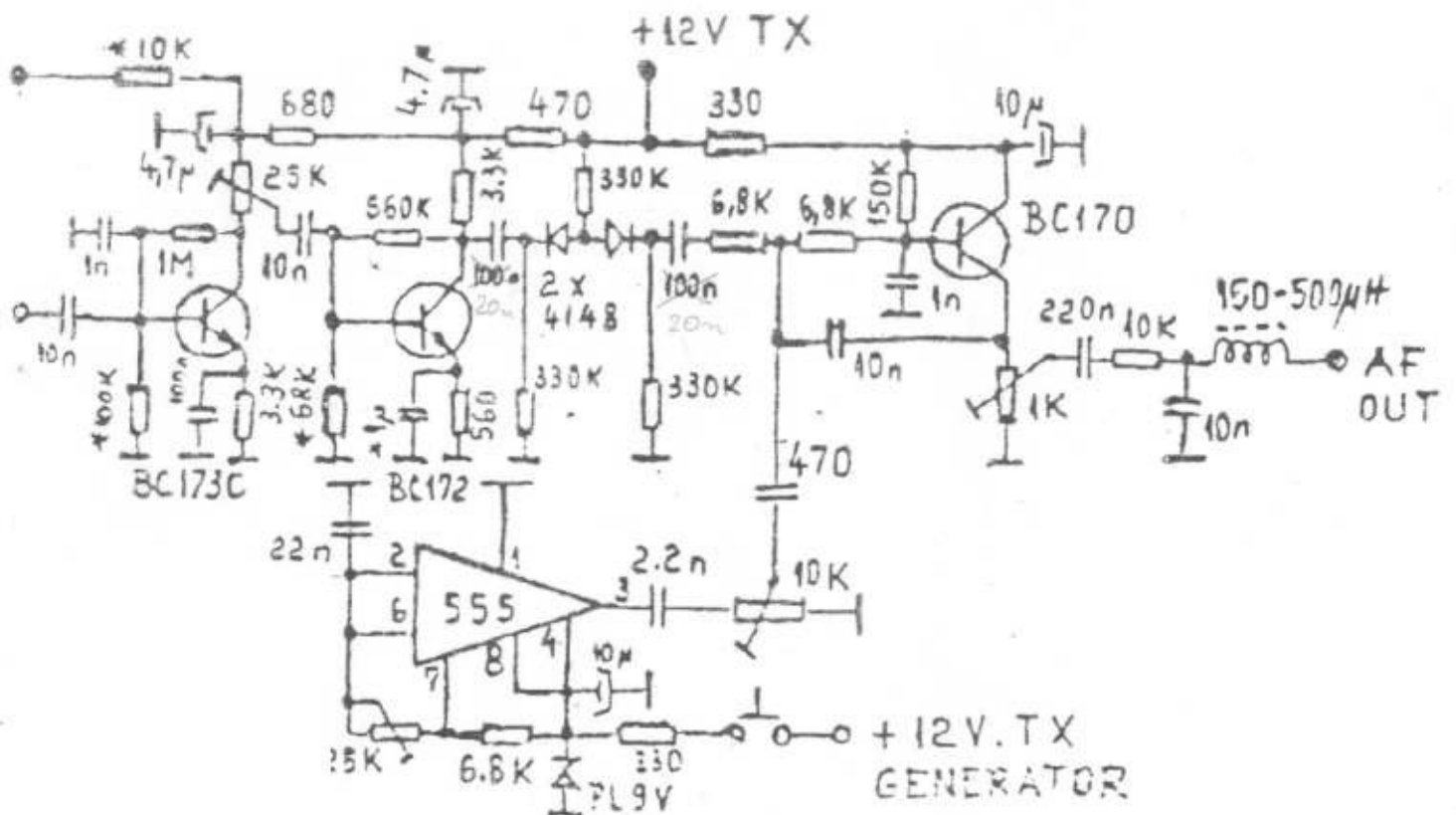
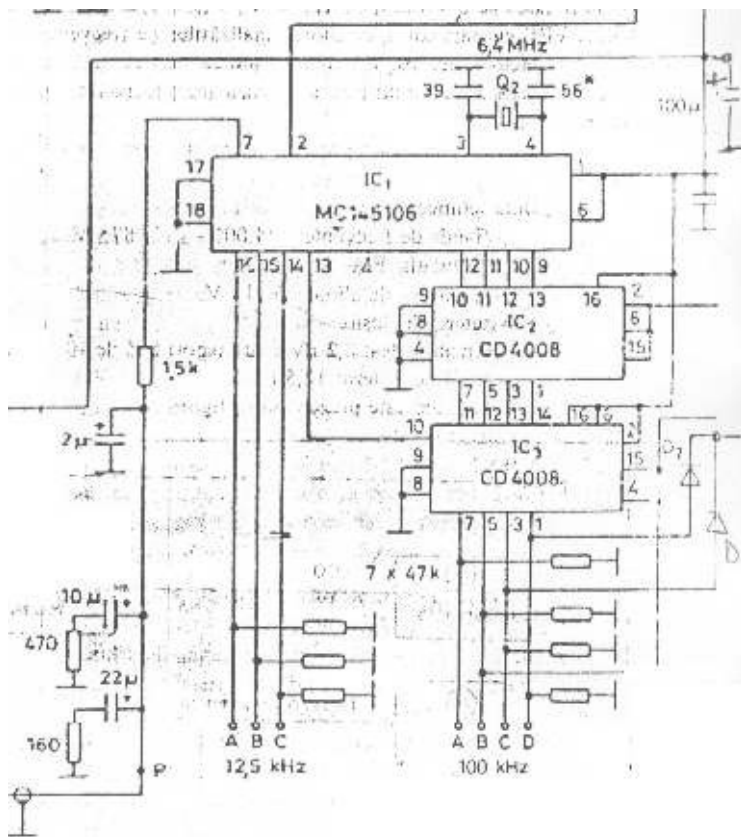
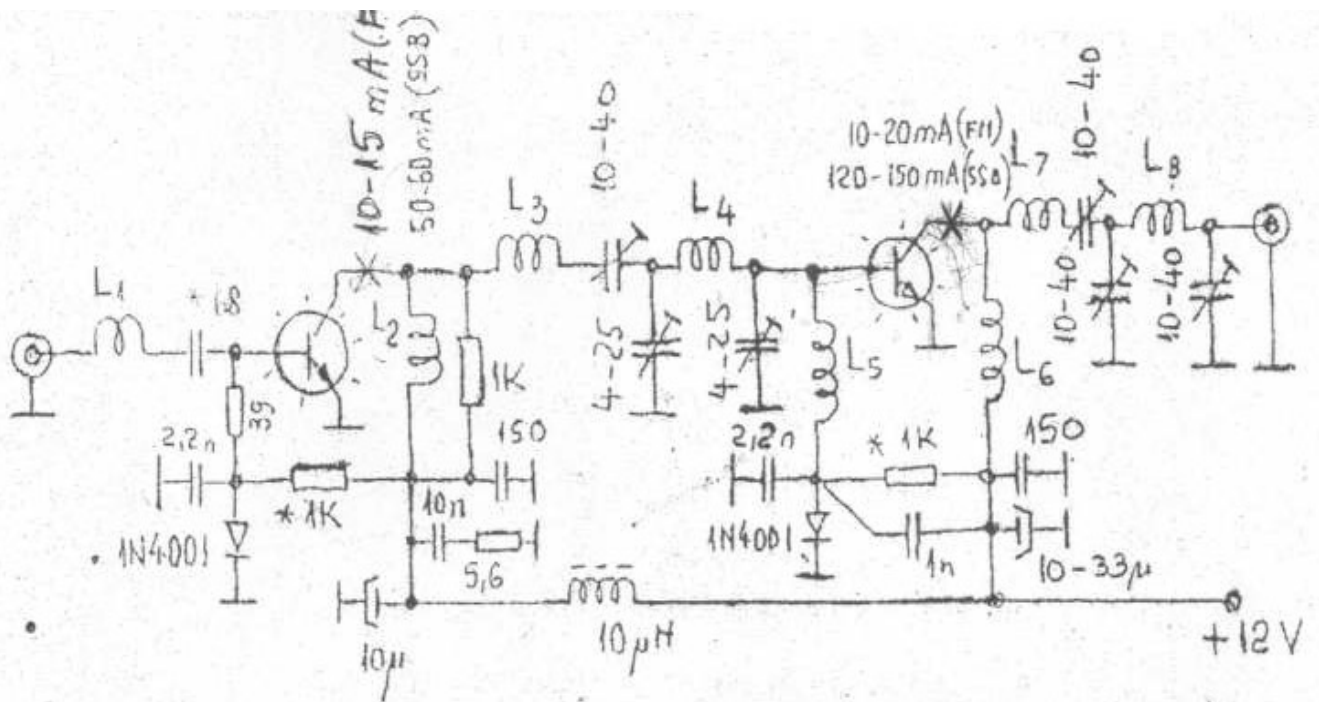


Syntetizer with MC145106



Mike preamplif. circuit

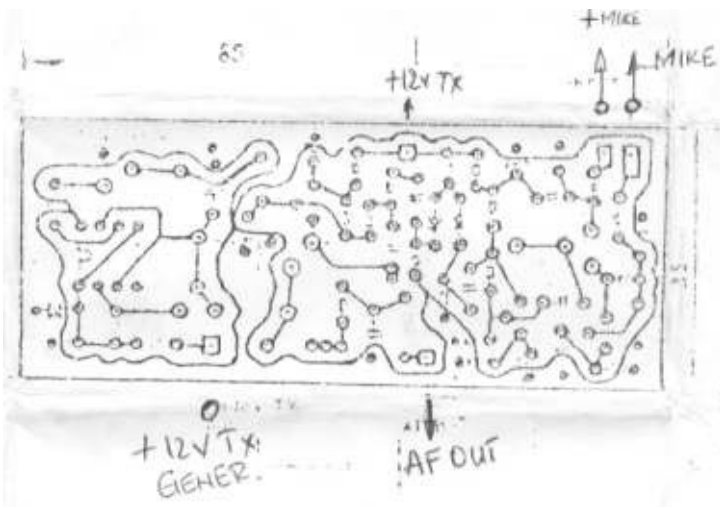


KT920A

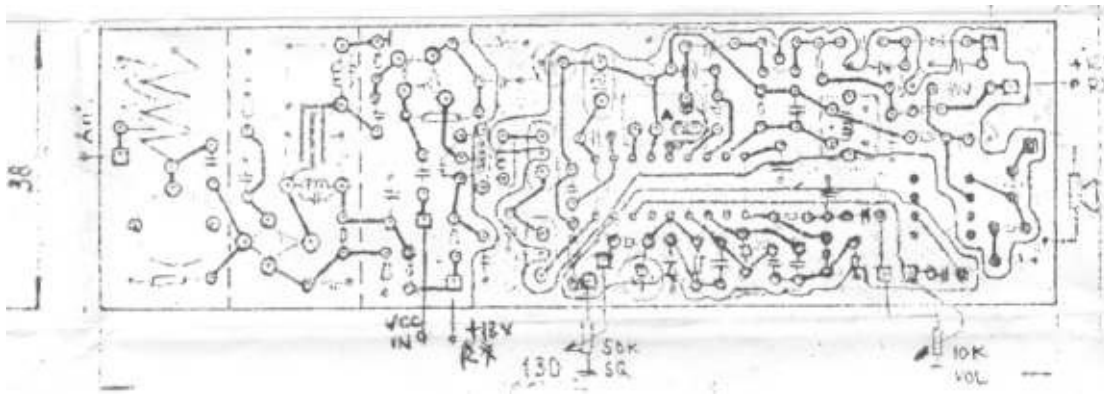
KT920B

- $L_1 = 1,5$ menet $\phi 7$ drót $\phi 1$ mm
- $L_2 = 6,5$ menet $\phi 6$ drót $\phi 1$ mm
- $L_4 = 2,5$ menet $\phi 6$ drót $\phi 1$ mm
- $L_3 = 4,5$ menet $\phi 6$ drót $\phi 1$ mm
- $L_5 = 6,5$ menet $\phi 6$ drót $\phi 1$ mm
- $L_6 = 5,5$ menet $\phi 6$ drót $\phi 1,5$ mm
- $L_8 = 2,5$ menet $\phi 7$ drót $\phi 1,5$ mm
- $L_7 = 4,5$ menet $\phi 7$ drót $\phi 1,5$ mm

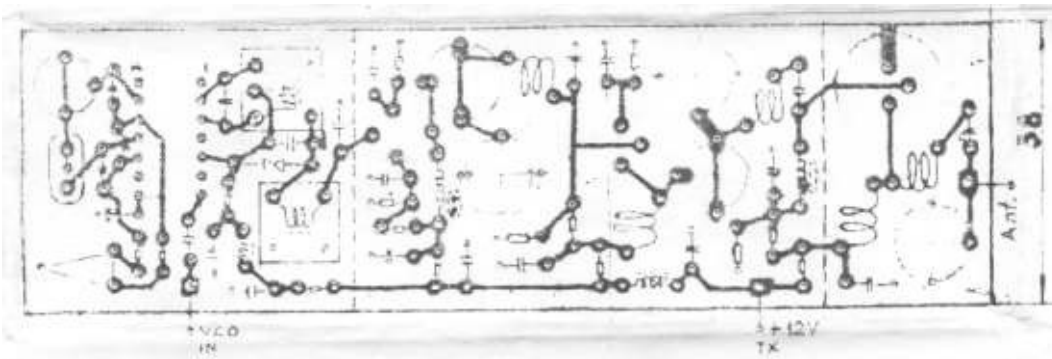
10W QRO with KT920A and KT920B



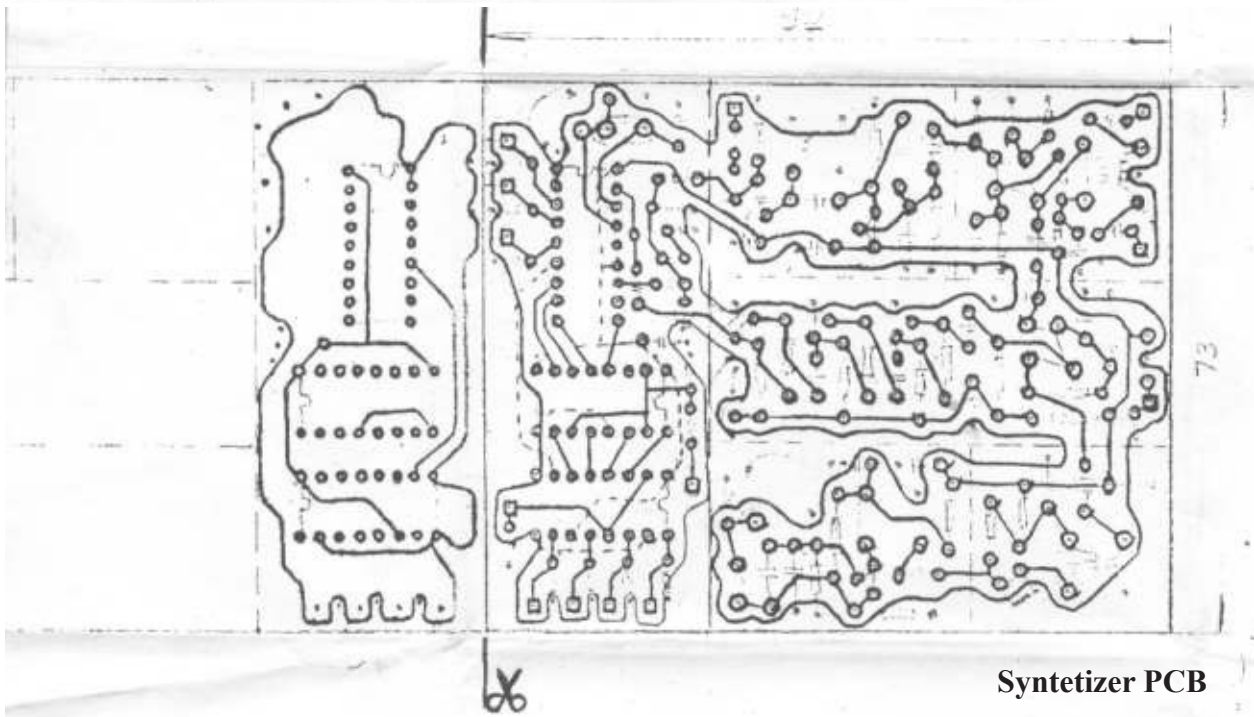
Mike PCB



RX PCB



TX PCB



Syntetizer PCB